

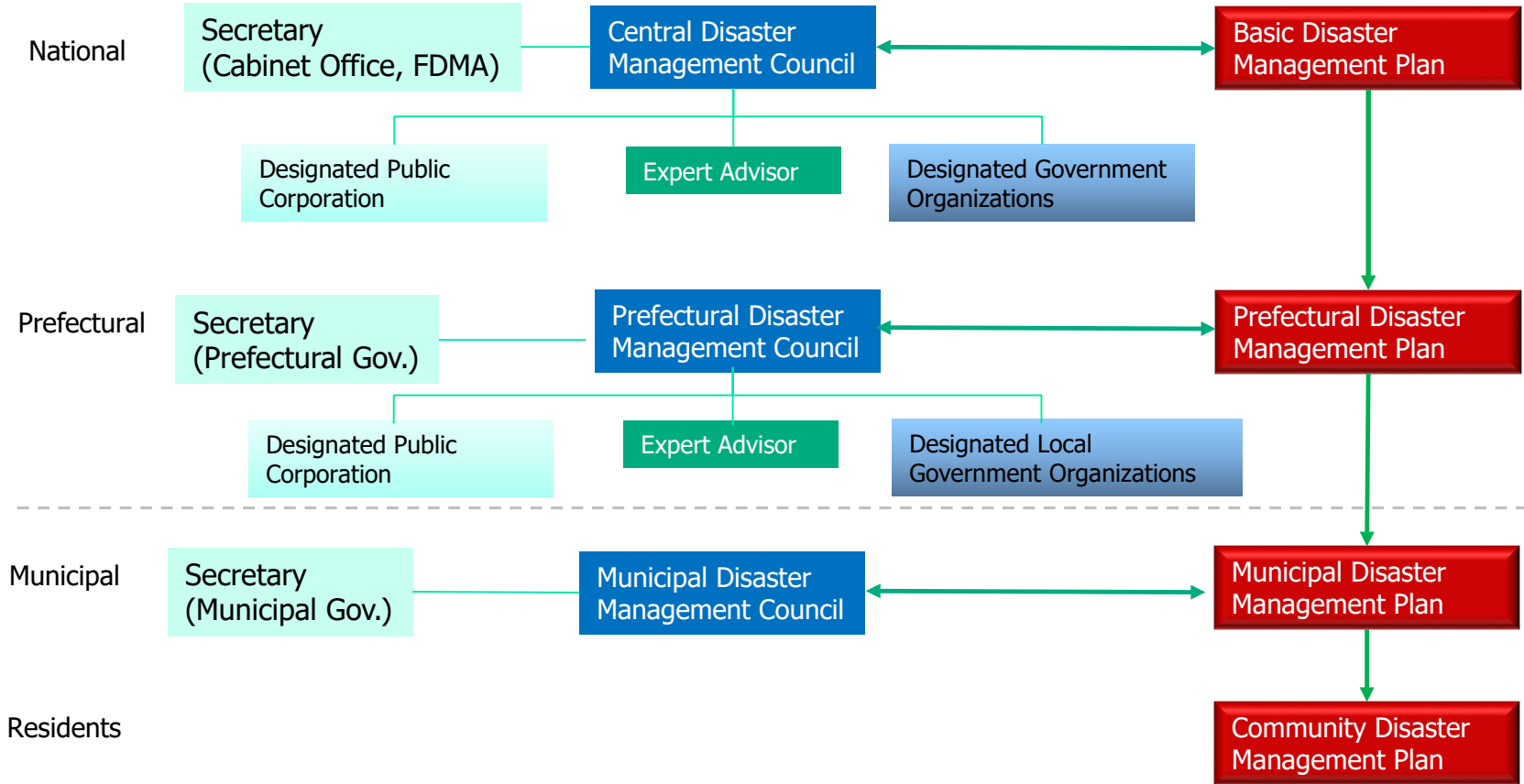


京都大学防災研究所
DPRI, Kyoto Univ.

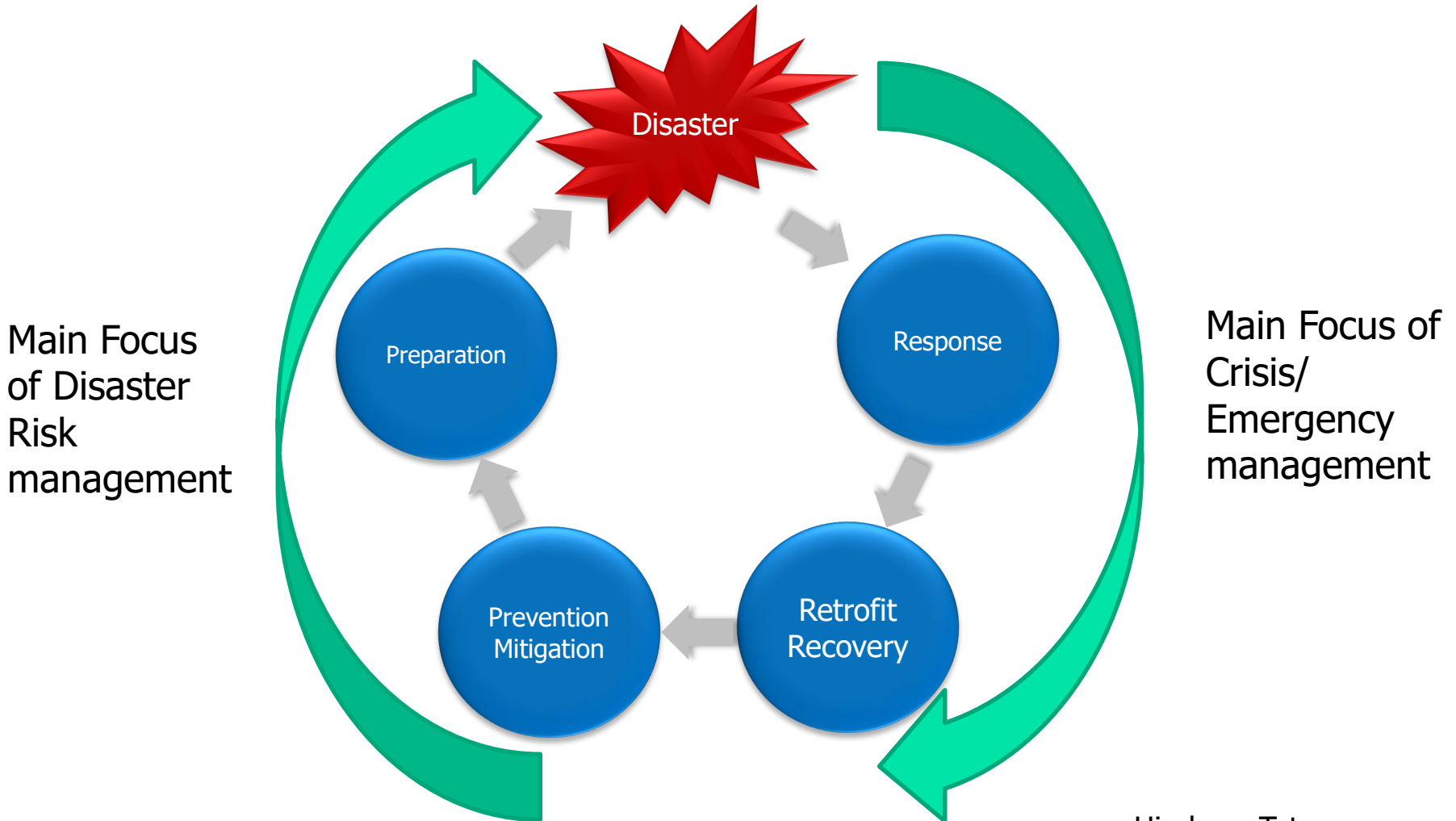
Disaster Risk Management and Emergency Management

Hirokazu Tatano
DPRI, Kyoto University

Disaster Management System in Japan



Disaster Cycle



Risk Management vs Emergency Management

- Risk management is the management to prevent or mitigate damage in advance (Ex ante).
- Crisis management, on the other hand, is management to deter damage, prevent its spread, and bring it to an end after the fact.
- "Risk management is about money, while crisis management is about survival" (Sasa)

Risk Management and Crisis Management (Objectives)

- Risk management, which covers various levels of risk at proactive phases, **deals with decisions on countermeasures to be taken in advance**, by evaluating whether the benefits are worth the costs of the measures.
- Crisis management, on the other hand, **aims to prevent damage expansions after the event** and to facilitate rapid response and recovery. Therefore, **with limited time and resources** available to implement countermeasures, the **priority goals must be narrowed down and quickly be executed.**

(Disaster) Risk Management Process

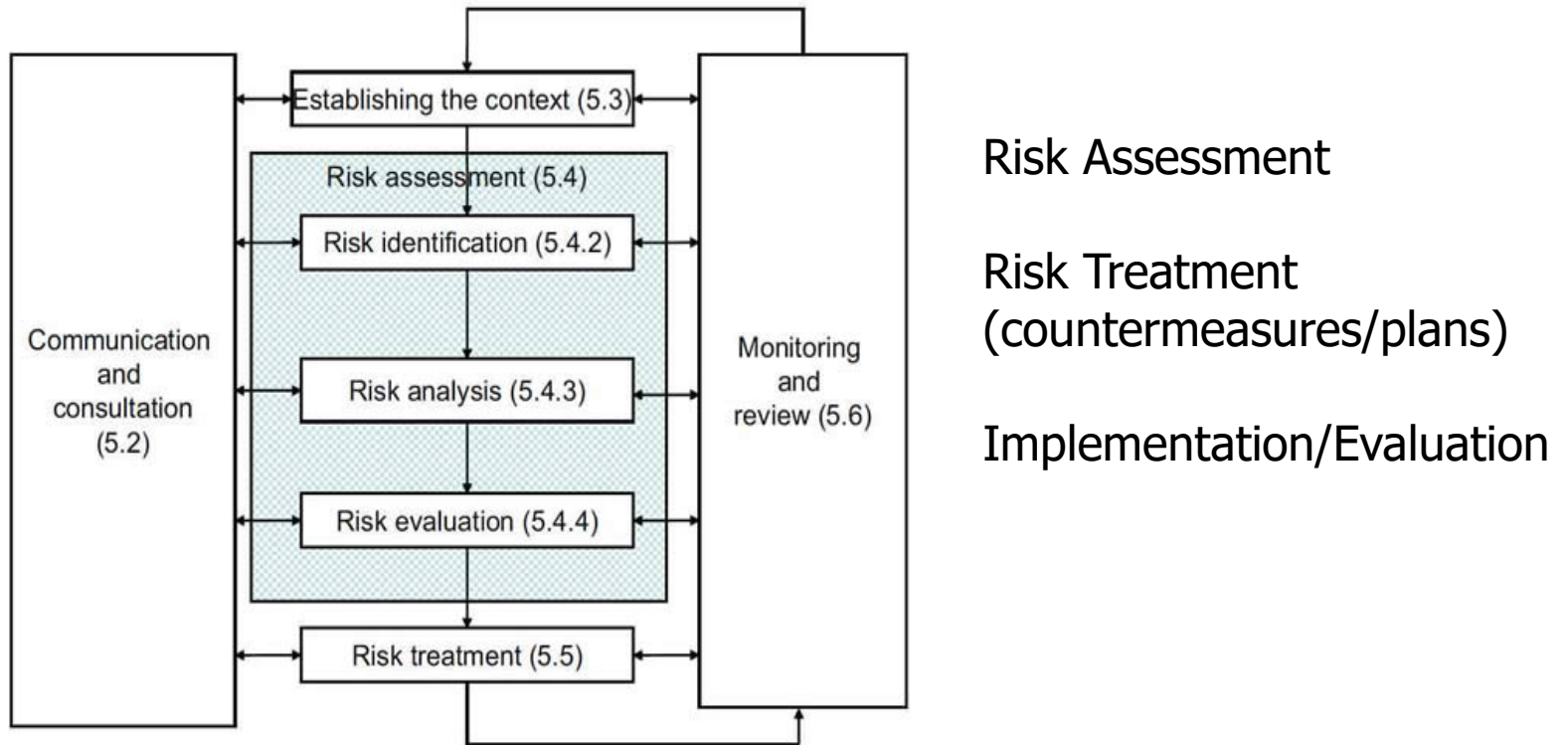
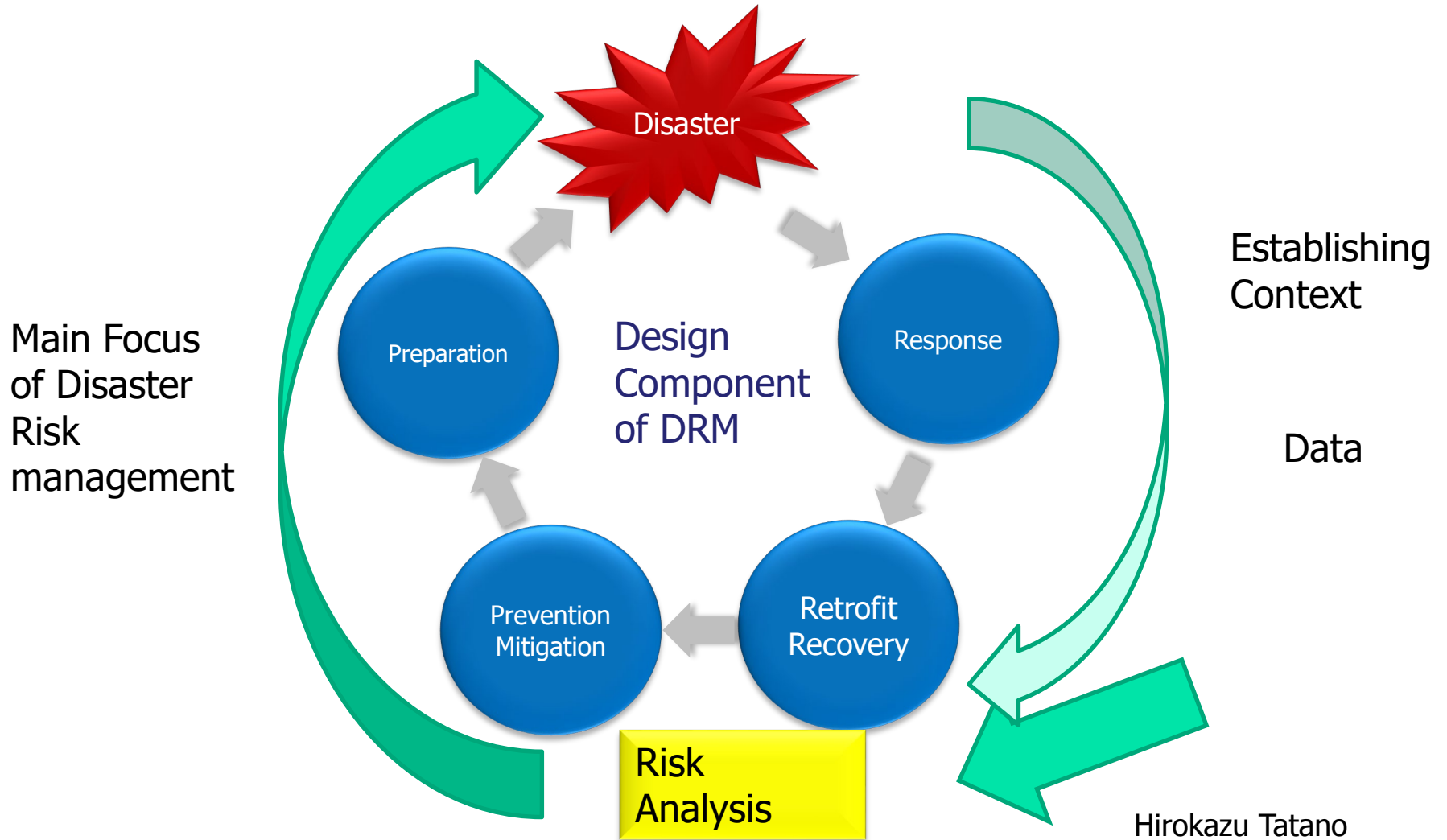


Figure 3 — Risk management process



Six steps of Crisis Management

1. Avoiding the crisis (Prevention and Mitigation)
2. Preparing to manage the crisis (Organizations, Education, Drills)
3. Recognizing the crisis
 - to aware the crisis and start response
4. Containing the crisis
 - to prevent the expansion of damages
5. Resolving the crisis
6. Recovering from the crisis

In the Disaster
Management Plan

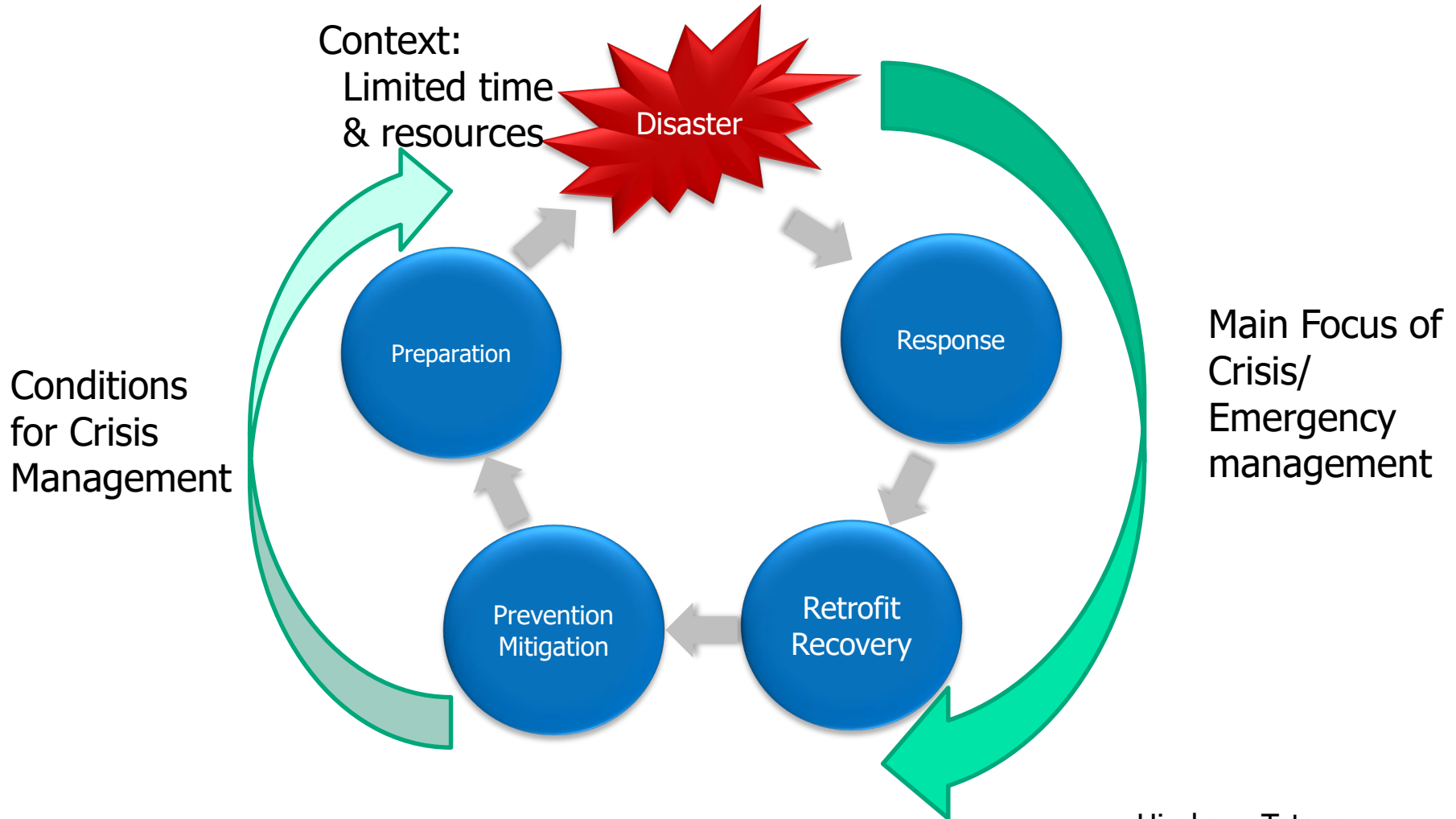


Disaster
prevention and
Preparation

Disaster
Emergency
Response

Disaster
Recovery and
Rehabilitation

Disaster Cycle



summary

- Disaster Management Plan(DRR Plan)
 - Consists of Disaster prevention/preparation plan and Disaster (emergency) response plan
 - In Japan, DMPs are enacted in different levels of governments and DM systems are formed to deal with DM in each level.
- Disaster Risk Management (Disaster Prevention/preparation part in DM Plan)
 - Focuses Management before a disaster happens, i.e., ex ante
 - To find most effective preparation to reduce disaster risk
- Crisis/ Emergency Management (Disaster response part in DM)
 - Ex Post Management
 - To prevent the expansion of damage and to achieve rapid recovery and reconstruction with the recognition of limited time and resources.