

National  
coordination  
response in  
Romania in  
**COVID-19  
PANDEMIC**



# ***THREAT***

## **IN ROMANIA**

On 23 January, experts attend the first meeting of the Scientific Technical Support Group



Following the meeting, it was found that there is a vulnerability at the national level, generated by the lack of necessary protective equipment for medical staff who could be involved in the treatment of highly contagious patients.



WHO declares global medical emergency on 31.01.2020 and pandemic on 11.03.2020

***LEGISLATION***

***COVID-19  
IN  
ROMANIA***

***FIRST  
MEASURES***

# LEGISLATION

On 4.02.2020, the Government of Romania adopted the Emergency Ordinance no. 11/2020, which establishes the emergency medical stocks, as material reserves for operational interventions, for the protection of the population

## February 2020

The National Central Procurement Office initiates the first award procedure in order to conclude framework agreements for emergency medical stocks.



## January 2020

### Lack of medical stocks

THE SITUATION OF THE ALL MEDICAL EQUIPMENT PURCHASED IN 2014-2015, IN ORDER TO REDUCE VULNERABILITIES TO EBOLA INFECTION



**1** NEGATIVE PRESSURE ISOLATION ROOM (FOR HOSPITAL)



**5000** MEDIUM COMPLETE PROTECTION EQUIPMENT

**10** COMPLETE HIGH PROTECTION EQUIPMENT (PACKAGED)

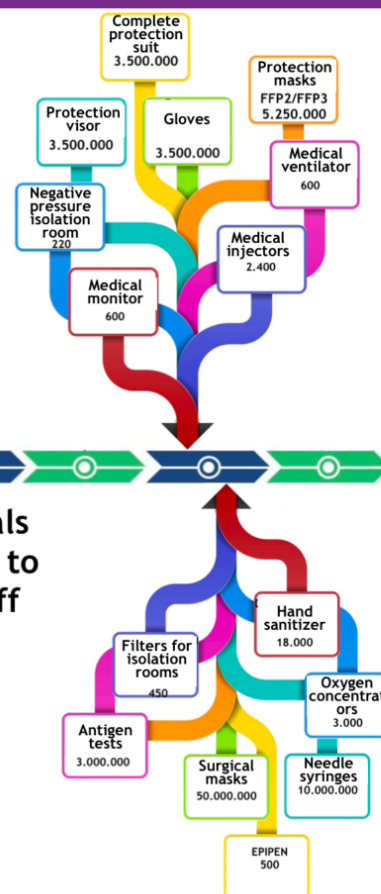
**100** COMPLETE HIGH PROTECTION EQUIPMENT (UNPACKAGED)



**40** ISOLATE CAPSULES WITH NEGATIVE PRESSURE, FOR TRANSPORT ON THE STRETCH



### Sanitary materials were distributed to the medical staff



# LEGISLATION

On 4.02.2020, the Government of Romania adopted the Emergency Ordinance no. 11/2020, which establishes the emergency medical stocks, as material reserves for operational interventions, for the protection of the population

## February 2020

The National Central Procurement Office initiates the first award procedure in order to conclude framework agreements for emergency medical stocks.



## January 2020

### Lack of medical stocks

THE SITUATION OF THE ALL MEDICAL EQUIPMENT PURCHASED IN 2014-2015, IN ORDER TO REDUCE VULNERABILITIES TO EBOLA INFECTION



**1** NEGATIVE PRESSURE ISOLATION ROOM (FOR HOSPITAL)



**5000** MEDIUM COMPLETE PROTECTION EQUIPMENT



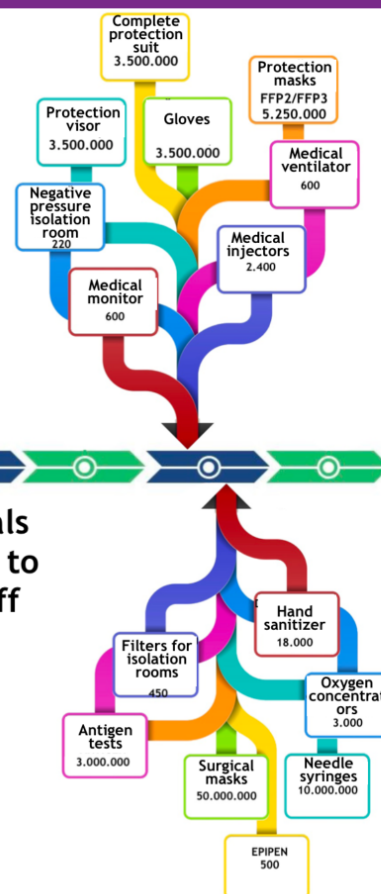
**40** ISOLATE CAPSULES WITH NEGATIVE PRESSURE, FOR TRANSPORT ON THE STRETCH

**10** COMPLETE HIGH PROTECTION EQUIPMENT (PACKAGED)

**100** COMPLETE HIGH PROTECTION EQUIPMENT (UNPACKAGED)



### Sanitary materials were distributed to the medical staff



# THREAT

## IN ROMANIA

On 23 January, experts attend the first meeting of the Scientific Technical Support Group



Following the meeting, it was found that there is a vulnerability at the national level, generated by the lack of necessary protective equipment for medical staff who could be involved in the treatment of highly contagious patients.



WHO declares global medical emergency on 31.01.2020 and pandemic on 11.03.2020

*LEGISLATION*

*COVID-19  
IN  
ROMANIA*

*FIRST  
MEASURES*

# COVID-19 IN ROMANIA



On 26.02.2020, the first case of infection with the new Coronavirus was confirmed in Romania

## FIRST LOCKDOWN



**16.03.2020**  
FOR 30 DAYS

## AT THAT POINT...



158 confirmed cases



3008 quarantined people



15.546 people monitored at home

## MEASURES



## AT NATIONAL LEVEL:

8 military ordinances

9 decisions of the National Committee for Emergency Situations

# ***THREAT***

## **IN ROMANIA**

On 23 January, experts attend the first meeting of the Scientific Technical Support Group



Following the meeting, it was found that there is a vulnerability at the national level, generated by the lack of necessary protective equipment for medical staff who could be involved in the treatment of highly contagious patients.



WHO declares global medical emergency on 31.01.2020 and pandemic on 11.03.2020

***LEGISLATION***

***COVID-19  
IN  
ROMANIA***

***FIRST  
MEASURES***

# ***FIRST MEASURES***



Limiting the activity of public hospitals to hospitalization and solving urgent cases



Isolation and quarantine of persons from risk areas, as well as those who come into contact with them; quarantine measures on buildings, localities or geographical areas



Restriction or prohibition of the movement of motor vehicles or persons in / towards certain areas or between certain hours, as well as exit from those areas



Temporary closure of restaurants, hotels, cafes, clubs, casinos, association headquarters and other public places



On 18.03.2020, the management of the emergency situations determined by the manifestation of the new coronavirus SARS-CoV-2, at national level, was taken over by the National Center for Coordination and Management of Intervention (CNCCI);



During the state of emergency, the operational command of the pre-hospital healthcare activity and qualified first aid organized at the level of Ambulance Services and county inspectorates for emergency situations, is provided by the chief inspector of county inspectorates for emergency situations / legal substitute.



# ***FIRST MEASURES***



**Limiting the activity of public hospitals to hospitalization and solving urgent cases**



**Isolation and quarantine of persons from risk areas, as well as those who come into contact with them; quarantine measures on buildings, localities or geographical areas**



**Restriction or prohibition of the movement of motor vehicles or persons in / towards certain areas or between certain hours, as well as exit from those areas**



**Temporary closure of restaurants, hotels, cafes, clubs, casinos, association headquarters and other public places**



**On 18.03.2020, the management of the emergency situations determined by the manifestation of the new coronavirus SARS-CoV-2, at national level, was taken over by the National Center for Coordination and Management of Intervention (CNCCI);**



**During the state of emergency, the operational command of the pre-hospital healthcare activity and qualified first aid organized at the level of Ambulance Services and county inspectorates for emergency situations, is provided by the chief inspector of county inspectorates for emergency situations / legal substitute.**

# ***THREAT***

## **IN ROMANIA**

On 23 January, experts attend the first meeting of the Scientific Technical Support Group



Following the meeting, it was found that there is a vulnerability at the national level, generated by the lack of necessary protective equipment for medical staff who could be involved in the treatment of highly contagious patients.



WHO declares global medical emergency on 31.01.2020 and pandemic on 11.03.2020

***LEGISLATION***

***COVID-19  
IN  
ROMANIA***

***FIRST  
MEASURES***

National  
coordination  
response in  
Romania in  
**COVID-19  
PANDEMIC**



# SECOND LOCKDOWN



**14.04.2020**  
*for 30 days*

## AT THAT TIME



**6.879 CONFIRMED PERSONS**



**23.645 PEOPLE IN QUARANTINE**



**67.268 PEOPLE IN ISOLATION**

**MEASURES**

**LEGISLATIVE  
MEASURES**

## ***LEGISLATIVE MEASURES***



**4 MILITARY ORDINANCES**

**5 Decisions of the National  
Committee for Emergency  
Situations**

# SECOND LOCKDOWN



**14.04.2020**  
*for 30 days*

## AT THAT TIME



**6.879 CONFIRMED PERSONS**



**23.645 PEOPLE IN QUARANTINE**



**67.268 PEOPLE IN ISOLATION**

**MEASURES**

**LEGISLATIVE  
MEASURES**

## ***MEASURES***



**supplementing the hospital units  
medical staff by detaching them and  
distributing protective equipment**



**facilitating medical treatments by  
granting exemptions from  
quarantine / isolation**



**adopting measures to prevent the  
spread of infection by establishing  
quarantine in some areas /  
neighborhoods / localities**

# SECOND LOCKDOWN



**14.04.2020**  
*for 30 days*

## AT THAT TIME



**6.879 CONFIRMED PERSONS**



**23.645 PEOPLE IN QUARANTINE**



**67.268 PEOPLE IN ISOLATION**

**MEASURES**

**LEGISLATIVE  
MEASURES**

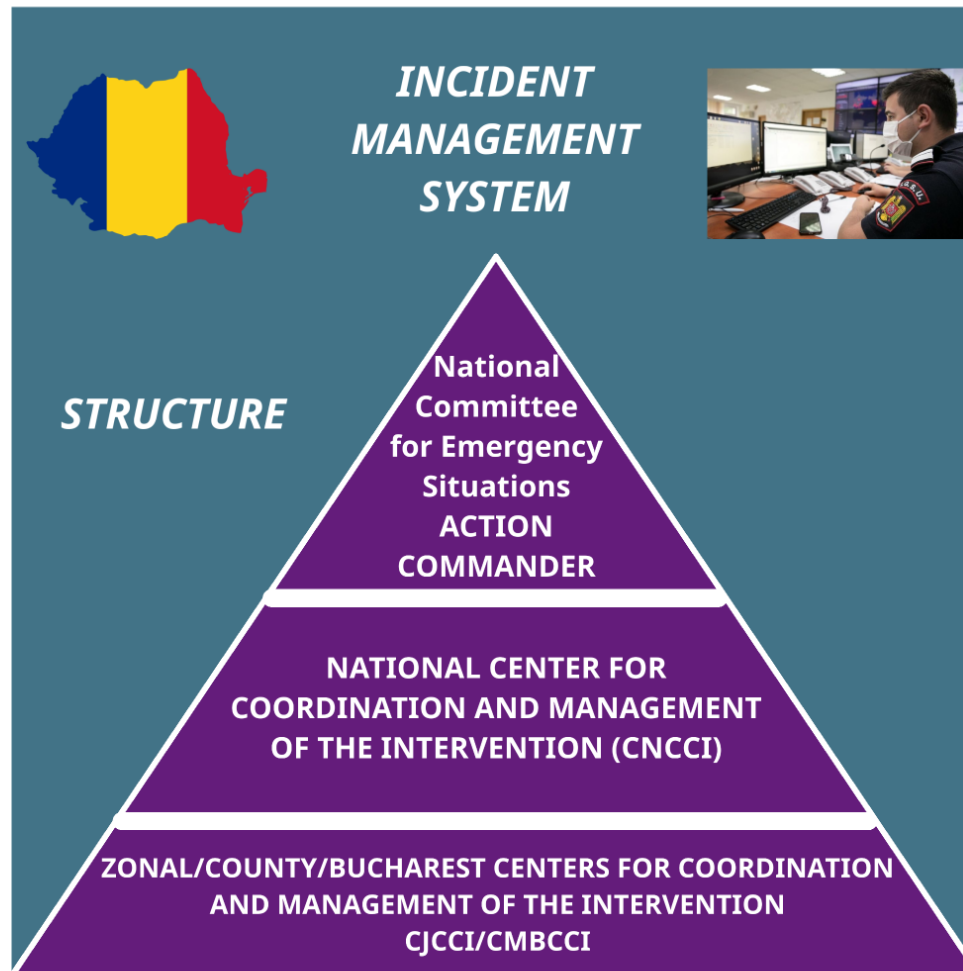


National  
coordination  
response in  
Romania in  
**COVID-19  
PANDEMIC**



**COVID-19  
IN  
ROMANIA**

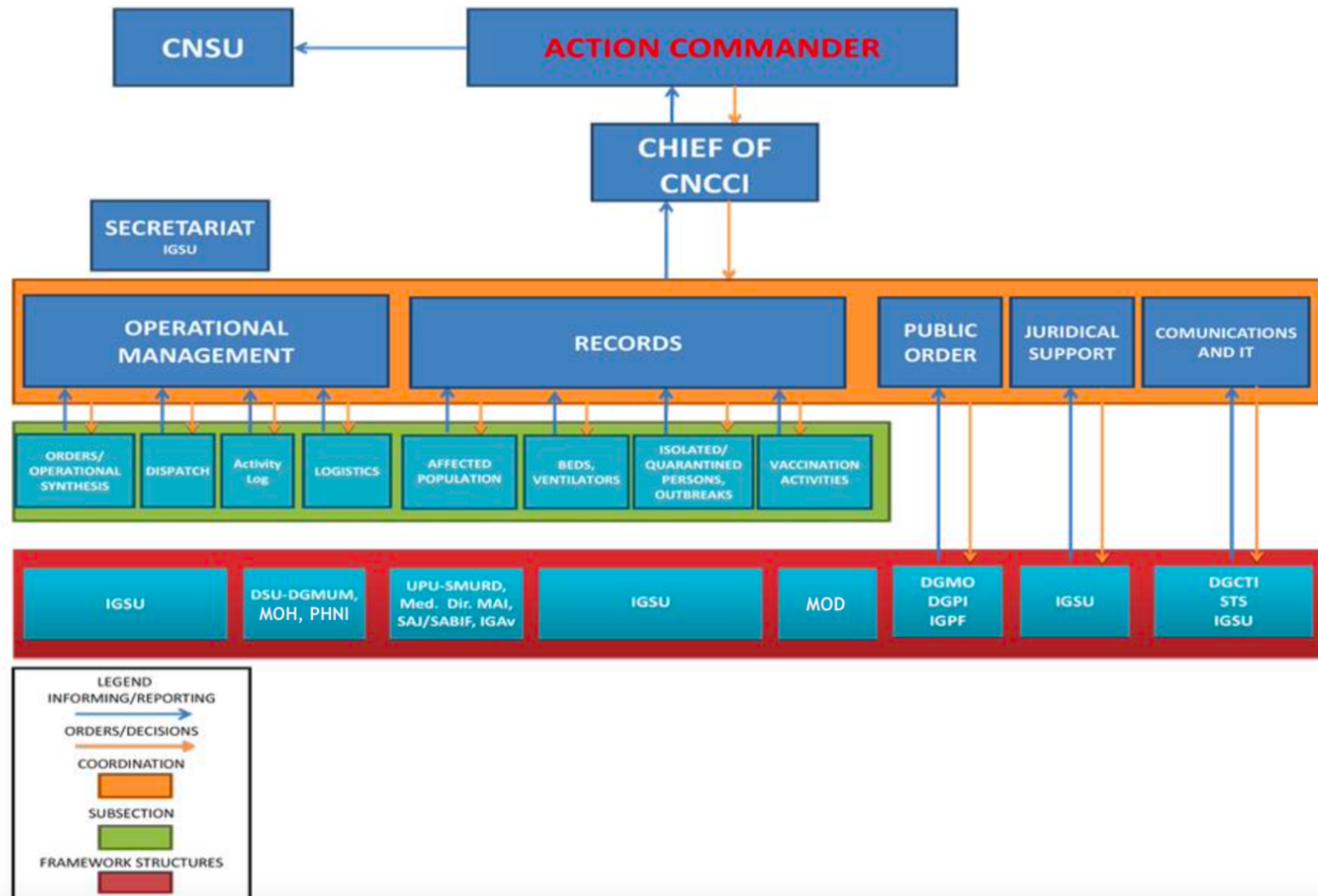
**SECTIONS**



**OPERATIONAL  
LEVEL**

**MEDICAL  
MANAGEMENT**

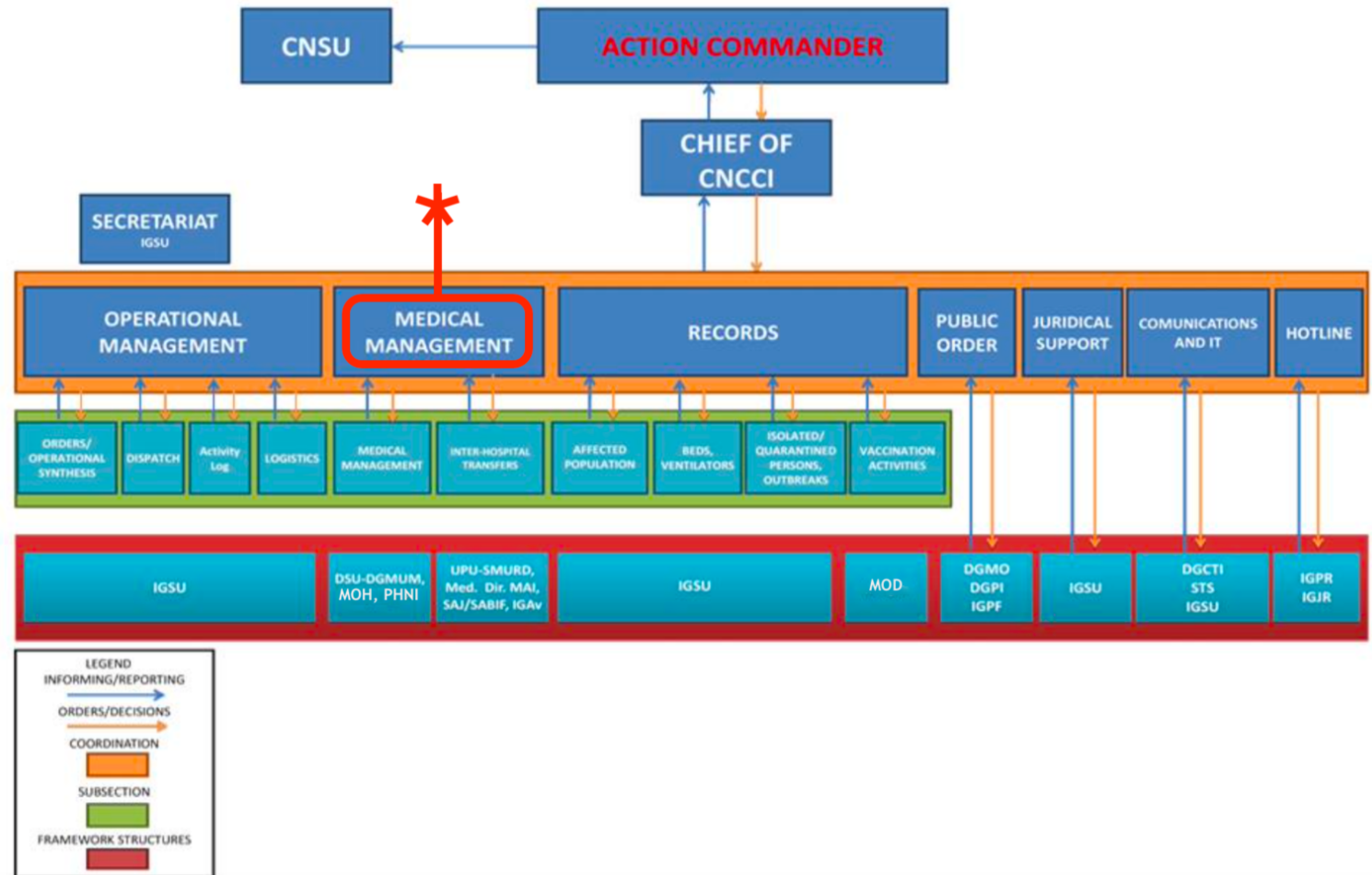
# Sections – at the start of the COVID-19 pandemic



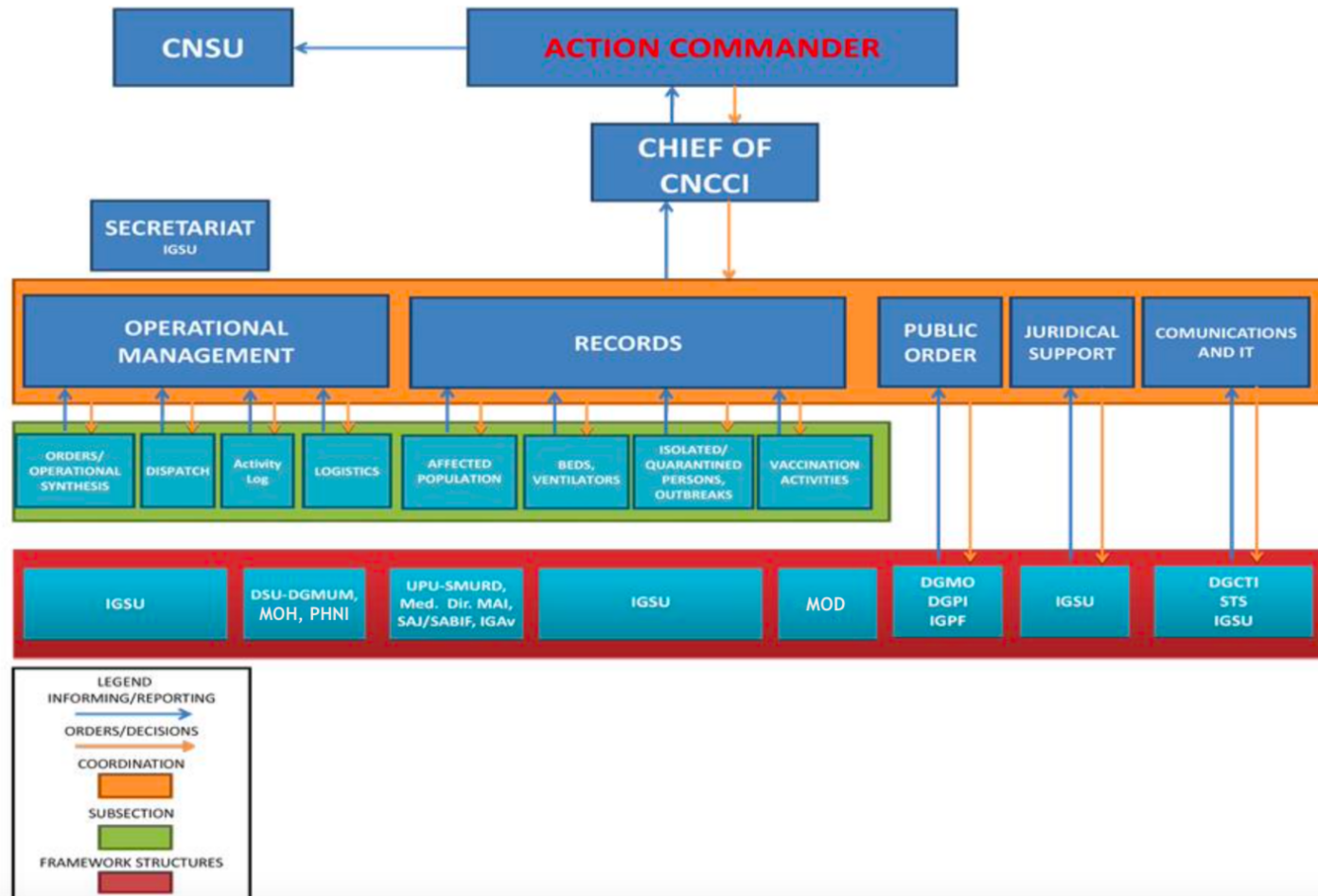
CNCCI

ADAPTED  
SECTION

# Sections – adapted\* to the COVID-19 pandemic



# Sections – at the start of the COVID-19 pandemic

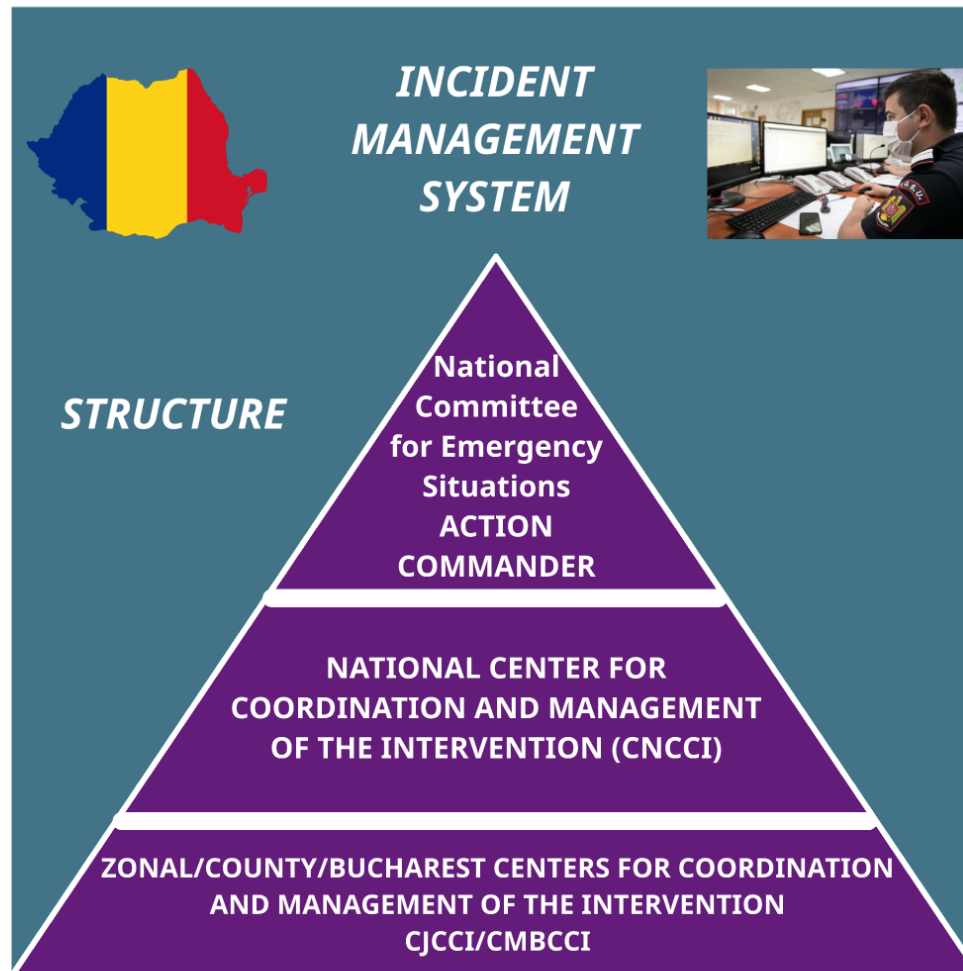


**CNCCI**

**ADAPTED  
SECTION**

**COVID-19  
IN  
ROMANIA**

**SECTIONS**



**OPERATIONAL  
LEVEL**

**MEDICAL  
MANAGEMENT**

## ***OPERATIONAL LEVEL***

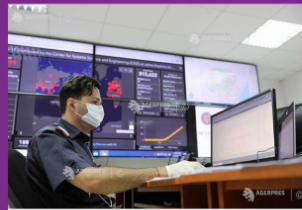


***OPERATED IN 18.03.2020***

### ***DUTIES***



CNCCI provided the decisional support for the commander of the action and the implementation of the measures established by the military ordinances, as well as by the other normative acts issued in application of the presidential decrees establishing / extending the state of emergency / alert on the Romanian territory.



***OTHER  
DUTIES***



**ensuring a continuous information flow between the components of the National Emergency Management System;**



**coordination and provision of specialized technical assistance regarding the requests received from the County Centers for Coordination and Management of Intervention**



**monitoring the resources needed to carry out missions to combat COVID-19;**



**data analysis with the support of the Ministry of Health and the National Institute of Public Health**



## ***OPERATIONAL LEVEL***

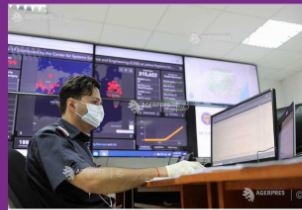


***OPERATED IN 18.03.2020***

### ***DUTIES***



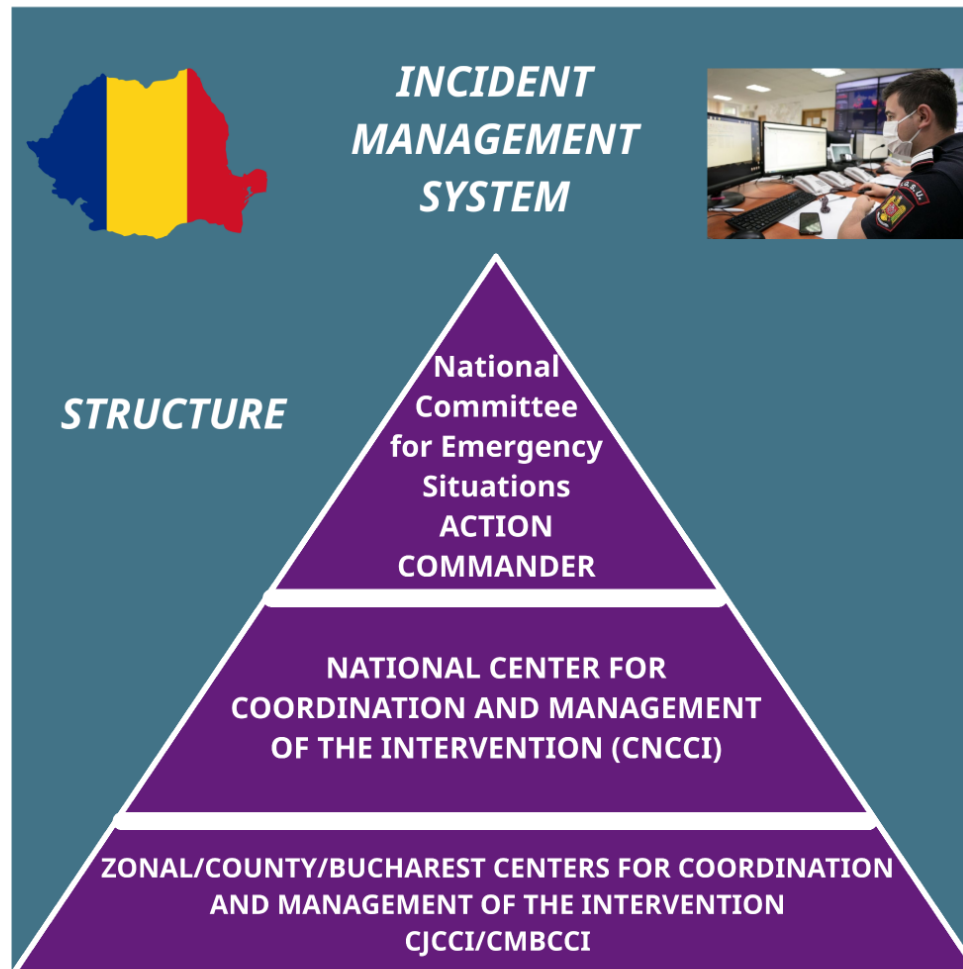
CNCCI provided the decisional support for the commander of the action and the implementation of the measures established by the military ordinances, as well as by the other normative acts issued in application of the presidential decrees establishing / extending the state of emergency / alert on the Romanian territory.



***OTHER  
DUTIES***

**COVID-19  
IN  
ROMANIA**

**SECTIONS**



**OPERATIONAL  
LEVEL**

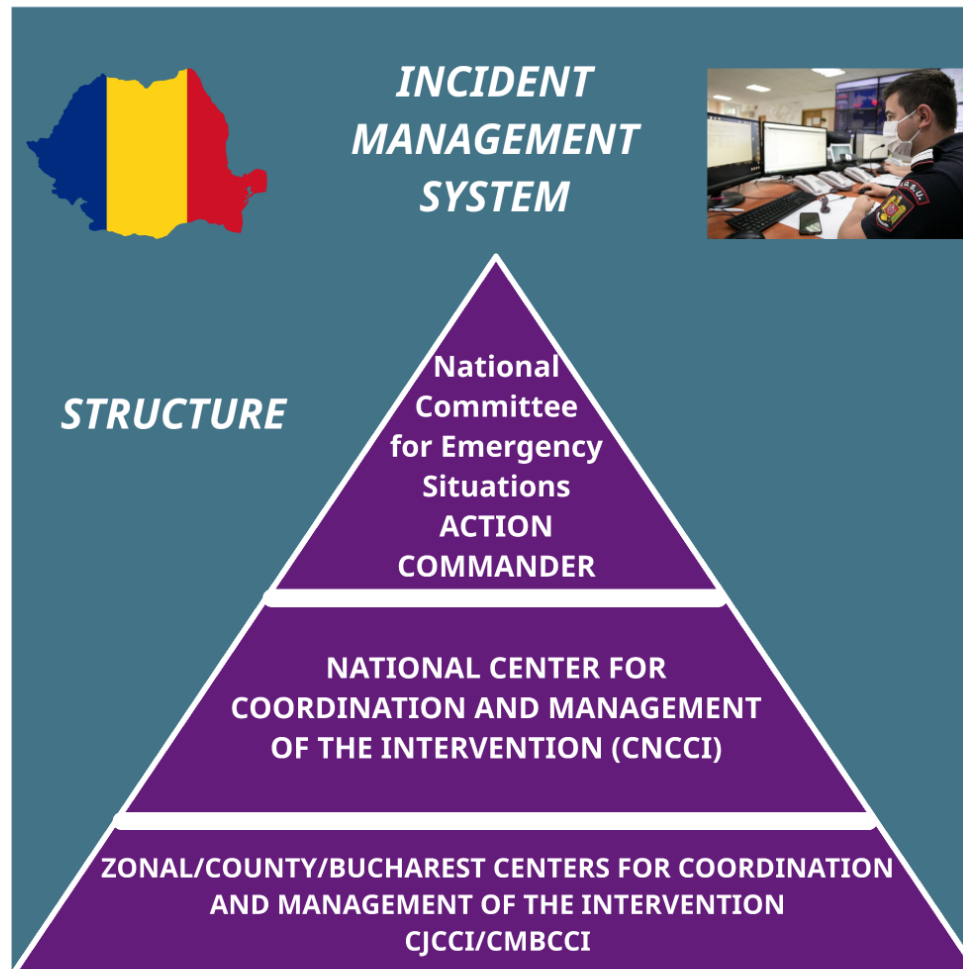
**MEDICAL  
MANAGEMENT**

## **MEDICAL MANAGEMENT DUTIES**

- ✓ **inter-hospital transfers**
- ✓ **detachment of medical staff**
- ✓ **transfer of patients with  
medical helicopters**
- ✓ **transfer of patients with  
military planes**

**COVID-19  
IN  
ROMANIA**

**SECTIONS**

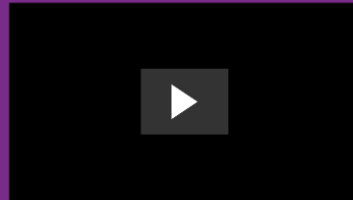


**OPERATIONAL  
LEVEL**

**MEDICAL  
MANAGEMENT**

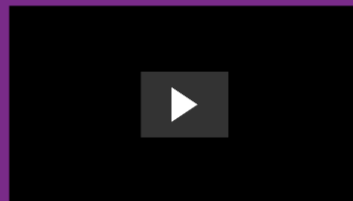
# COVID-19 IN ROMANIA

## INTENSIVE CARE UNITS



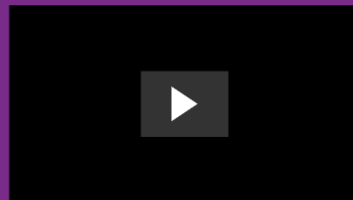
- 3.317 inter-hospital transfers
- 10.104 medical staff detached in COVID SUPPORT COVID hospitals

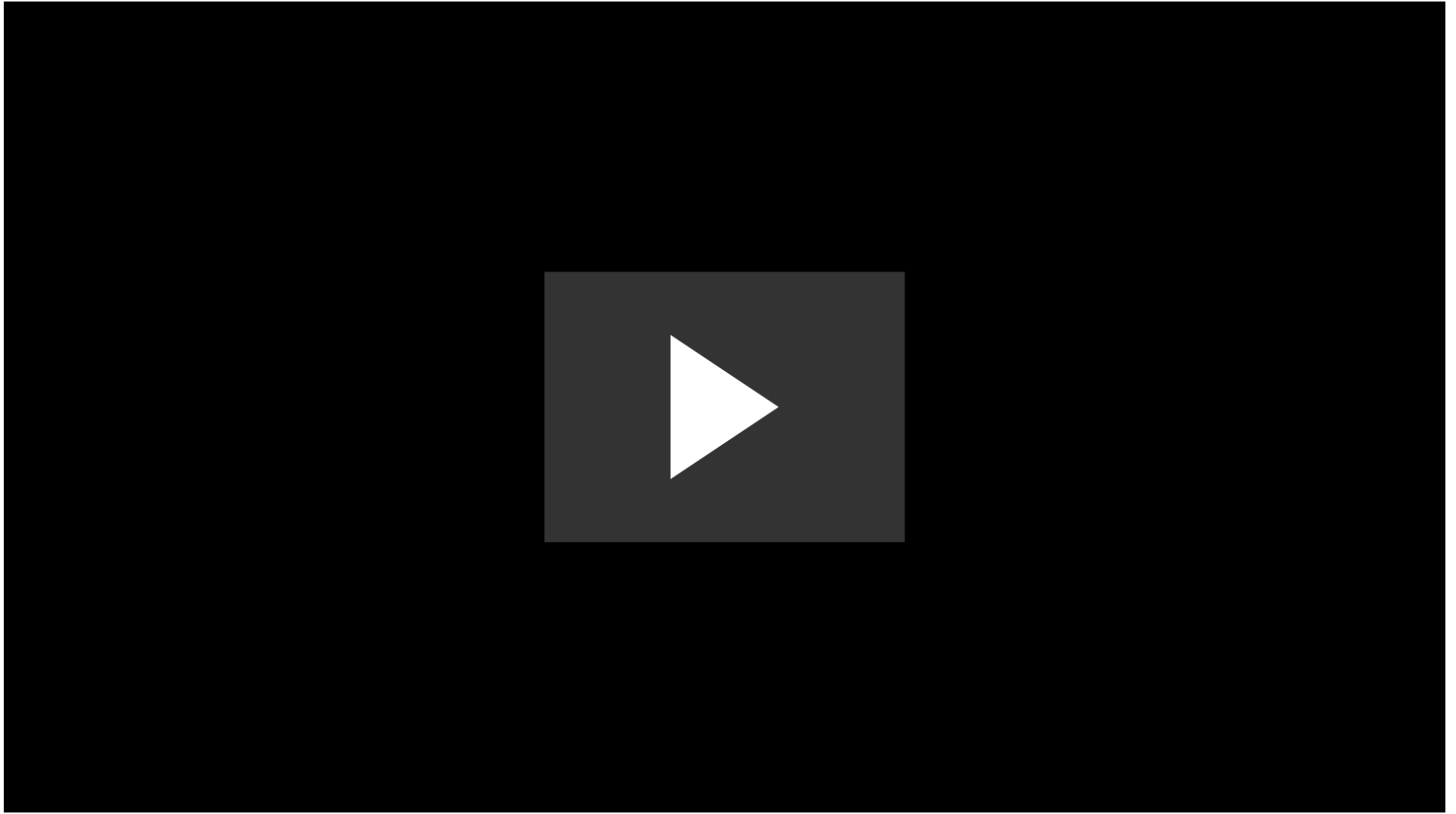
## TRANSFER OF PATIENTS WITH MEDICAL HELICOPTERS

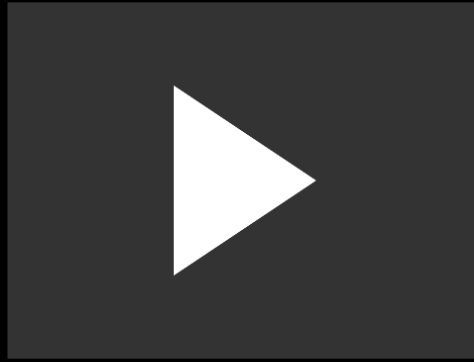


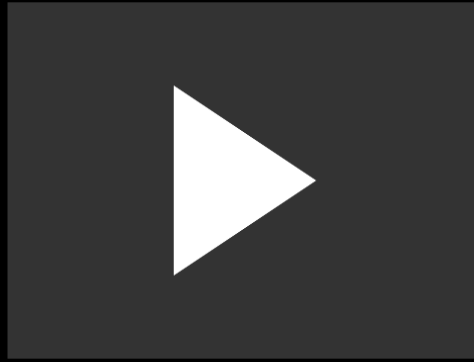
- 148 patients with helicopters of General Inspectorate of Aviation
- 4 patients with airplanes provided by Ministry of National Defense

## EMERGENCY UNITS





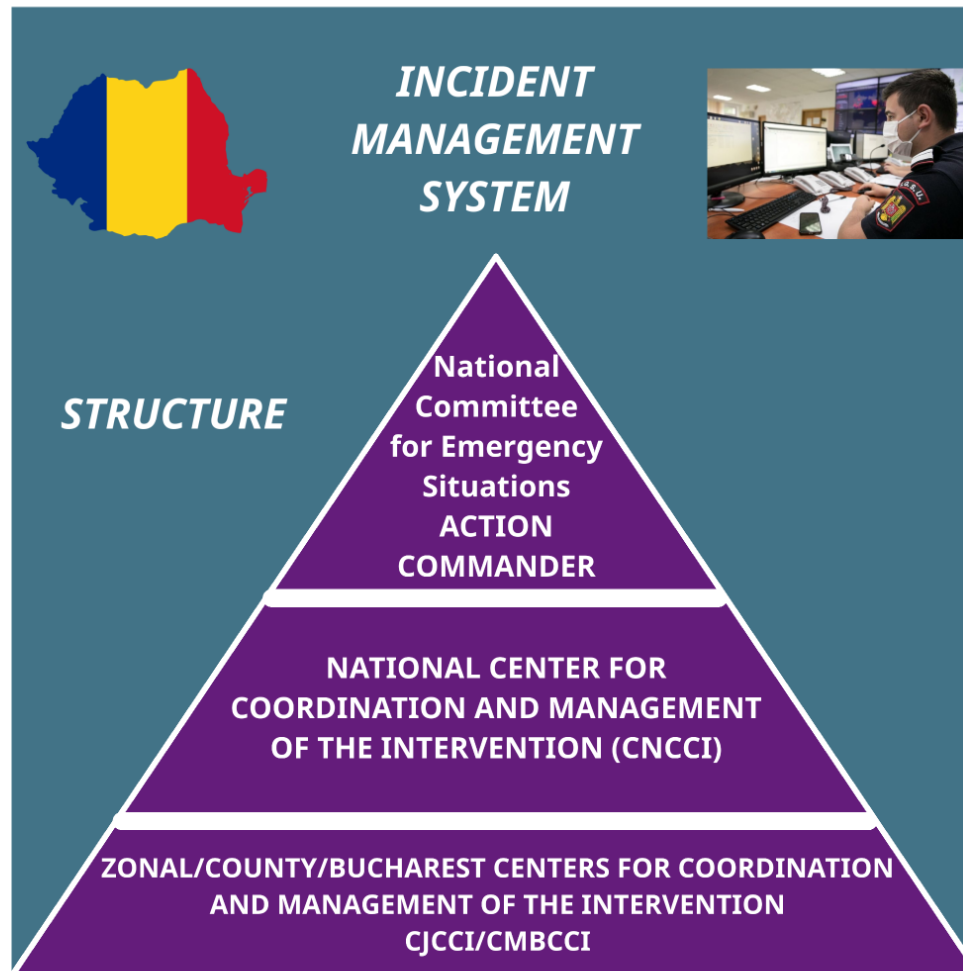






**COVID-19  
IN  
ROMANIA**

**SECTIONS**



**OPERATIONAL  
LEVEL**

**MEDICAL  
MANAGEMENT**

National  
coordination  
response in  
Romania in  
**COVID-19  
PANDEMIC**





# MISSIONS

Special missions for the repatriation of Romanian citizens, blocked in other states, in the context of the COVID-19 pandemic, with the help of Ministry of Foreign Affairs, Ministry of National Defense, Ministry of Transport

