



3rd IDRiM Café

Beirut Explosion August 2020

Pekka Tiainen

Ministry of the Interior, Finland
Department for Rescue Services

27.8.2021



**Beirut
Harbour
after
explosion
4.8.2020**



Emergency Response Coordination Centre

In May 2013, we launched the

Emergency Response Coordination Centre (ERCC)

Monitors disasters
around the globe

24/7

Maps disaster risks



Provides real-time
information



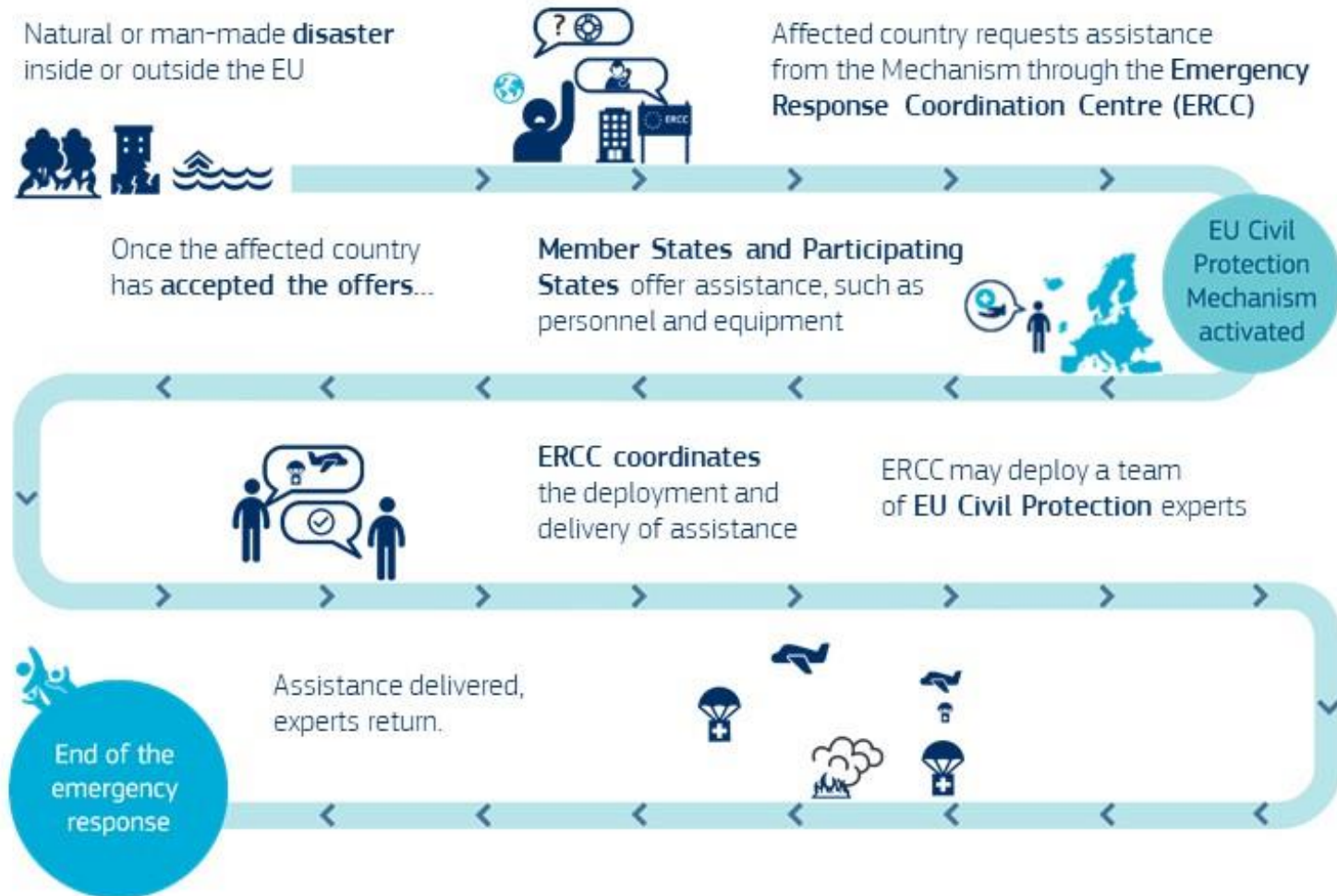
Coordinates joint European
response operations



ERCC phone number
+32 229 21112



How does the **EU Civil Protection Mechanism** work?



Briefing 6.8.2020

Internal report – for distribution in European Commission, EEAS and Union Civil Protection Participating States



EUROPEAN COMMISSION
JOINT RESEARCH CENTRE

Directorate E - Space, Security and Migration (Ispra)
Disaster Risk Management

Beirut - Explosions on 4 Aug 2020

Internal Report

UPDATE

Authors: C. Proietti, M. Santini, P. Probst, C. Louvrier, A. Wania, I. Joubert-Boitat, P. Spruyt, L. Fabbri

Authorized by: T. De Groeve, Deputy Head of JRC.E.1 Disaster Risk Management Unit

Version: 06/08/2020 (internally reviewed)

Beirut explosions map: 04 August 2020

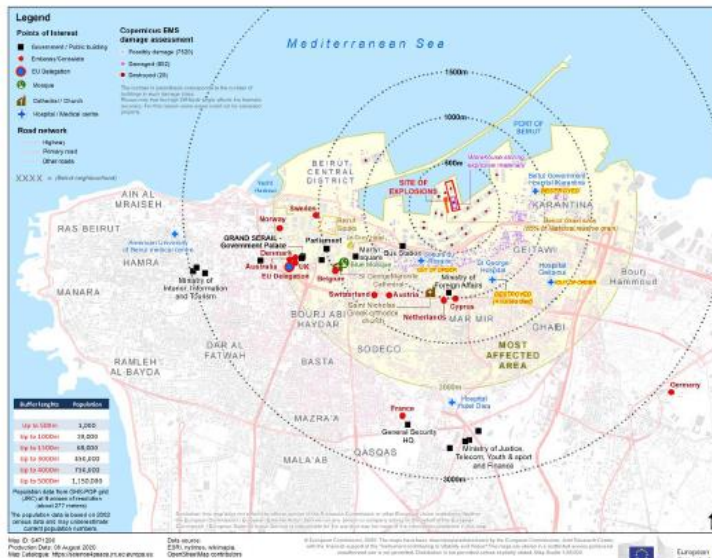


Fig. 1 – Situation map, as prepared for the External Action Service (as of 06/08 12:00)



- Explosion (2 750 tn ammonium nitrate) = 4,5 Richter scale EQ, strong shock wave and fire at the harbour.
- Immediate impact: approx.100 deaths ,5 000 injured, 300 000 loss their homes.



EU Civil Protection Team



Finland
Romania
France
Denmark
Czech Republic
Slovenia
Sweden
Germany
The Netherlands
Two ERCC LO



EU Civil Protection Mechanism response

- 20 MS/PS offered teams and tons of in-kind assistance, such as technical protective clothing, medical supplies and equipment, hygiene kits and shelter items, food, vehicles, generators etc.
- 7 MS/PS (CZ, FR, DE, EL, NL, PL and IT) deployed 6 USAR, 1 CBRN and 1 medical team. The UCPM response supported the initial search and rescue operations and emergency care as well as the later infrastructure rehabilitation and damage assessment efforts. In total, around 300 personnel from the EU joined the response.
- EUCP Team: 17 experts from 9 MS/PS (CZ, DE, DK, FI, FR, NL, RO, SE, SI) and 2 ERCC Liaison Officers.
- Building up in previous experiences: 2006, 2013, Albania 2019



EU Civil Protection Mechanism response + int. response

EU response

- A **USAR Coordination Cell (UCC)** was established by the **NL HUSAR**, support the Lebanese Armed Forces with coordination of the international search and rescue response.
- USAR experts joined the **Damage Assessment Coordination Cell (DACC)** and supported the assessment of damaged buildings, > **580** assessments were carried out in the municipality of Beirut by engineers from international USAR teams, with more than half carried out by engineers from UCPM teams.
- A **FR medical team**, together with medical personnel from search and rescue teams, treated more than 150 patients.
- **IT CBRN** experts supported the operations by identification of possible CBRN related risks and definition of mitigation measures in the area affected by the explosion.



A map of the Middle East region, showing the Mediterranean Sea to the west and the Red Sea to the south. A red dot marks the location of Beirut, Lebanon, on the eastern coast of the Mediterranean Sea. The word "Beirut" is written in black text next to the red dot.

-  > 200 deaths
-  6,000 injured
-  20 missing

Source: DG ECHO

Damage classes

- Destroyed buildings
- Damaged buildings
- Possibly damaged buildings ¹

EU delegation /
ECHO office

ECHO field team on the ground is being reinforced with seven technical humanitarian experts, including sector experts for shelter, WaSH, health, logistics and information and communication.

EU Civil Protection Team


1 team leader, 1 deputy team leader, 1 logistics expert, 1 USAR coordination expert, 1 information management expert, 1 structural engineer, 1 environmental expert, 1 waste management expert, 1 medical expert, 6 TAST² members and 2 ERCC liaison officers (LO).




Beirut

Beirut Port

Explosion site

 Hospital facility

EU Humanitarian
Air Bridge

 Warehouse /
distribution centre

Build-up

EU RESPONSE

EUR 33 M initial assistance (of which EUR 2 M made directly available) + **EUR 30 M** additional humanitarian funding pledged.

Humanitarian Air Bridge bringing in supplies for UNICEF and Médecins du monde

Union Civil Protection Mechanism (UCPM)

Modules²: 5 MUSAR (CZ, DE, EL, FR, PL), 1 HUSAR (NL), 1 CBRN (IT) and 1 Medical Team (FR)

In-kind assistance: (chemical protective) clothing, medical supplies and equipment, surgical kits, emergency health kits, hygiene kits, shelter equipment, food items, mortuary deposits, generators and vehicles (ambulance and fire truck).



4 Aug. 15h UTC
Explosion

4 Aug 22h UTC

5 Aug.
Arrival of first USAR teams
and first in kind assistance

4 Aug 23h UTC

4 Aug. 23H UTC
First LICBM offer

6/7 Aug.

Arrival of EUCPT and ERCC LO's

Copyright, European Union, 2020. Map created by DG ECHO A.3. Situational Awareness Team. Sources: DG ECHO, GISCO, OCHA, OSM. The boundaries and names shown on this map do not imply official endorsement or acceptance by the European Union.

¹ Possibly damaged buildings were mainly classified by information from media reports and debris on the ground. Most of these damages are related to broken windows.

^aHUSAR: Heavy Urban Search and Rescue; MUSAR: Medium Urban Search and Rescue; CBRN: Chemical, Biological, Radioactive, Nuclear; TAST: Technical Assistance and Support Team

Challenges

- Hospitals overwhelmed by numbers of injured, five hospitals damaged (~500 beds lost). Many health centers and primary health care providers also no longer functional.
- COVID-19 pandemic ongoing (5.672 cases reported, 70 fatalities as of 7 August 2020), explosion reportedly also destroyed the stockpile of medical supplies stored in the port area (around 50% of total stocks).
- Ongoing severe socio-economic crisis, repeated civil unrest starting in October 2019 => restricted movements.
- Lebanon is a host country to 170,000 Palestinian and 1.5 million Syrian refugees.
- Lebanese Armed Forces (LAF) in charge at Beirut region (including harbor and airport) => no experience of the civilian response and coordination systems.





Sisäministeriö
Inrikesministeriet



Sisäministeriö
Inrikesministeriet



The President of the European Council, Charles Michel



General Joe Haddad, LAF



The Ambassador of the European Union to Lebanon, Ralph Tarraf



EU office





Thank you!



Sisäministeriö
Inrikesministeriet



Sisäministeriö

Inrikesministeriet

Kirkkokatu 12, Helsinki
PL 26, 00023 Valtioneuvosto
Vaihde 0295 480 171
kirjaamo@intermin.fi